



# AAPG

## SOUTHWEST SECTION



**AAPG**

Southwest Section

## 2014-15 Officers



Robert Webster  
Advisory Counselor



Jeffery Ritchie  
President  
Stephens Engineering



Darrell Mauldin  
President-Elect  
TravCon Exploration, LLC



Nicolas Brissette  
Vice President  
Gunn Oil Company



David Entzminger  
Past President  
Whiting Oil and Gas Corporation



Curtis Helms, Jr.  
Secretary  
Trey Resources, Inc.



Jessica Pontiff  
Treasurer  
COG Operating LLC



## Southwest Section Affiliated Societies

- Abilene Geological Society
- Dallas Geological Society
- El Paso Geological Society
- Fort Worth Geological Society
- Graham Geological Society
- North Texas Geological Society
- Roswell Geological Society
- San Angelo Geological Society
- West Texas Geological Society



Southwest Section AAPG Annual Conference

11-14 April • Wichita Falls, Texas

**ROCK THE FALLS**

*Evaluating the Past, Exploring the Future*



2015 Southwest Section AAPG  
Annual Convention

More Information

Hosted by the North Texas Geological Society

<http://www.ntgeologicalsociety.org/>



**AAPG**

Southwest Section



**Southwest Section AAPG Annual Conference  
All-Convention and DPA Luncheons**



**All-Convention Luncheon**

**Monday, April 13<sup>th</sup> 12:00-1:15pm**

**"Energy Makes America Great – The Politics of Energy and their Economic Impact"**

Marita Noon



**AAPG Division of Professional Affairs Luncheon**

**Tuesday, April 14<sup>th</sup> 12:00-1:30pm**

**"Owners of Oil – Their Exploration and Discovery of a Vision"**

Michael A. Oestmann



2015 Southwest Section AAPG Annual Conference

Field Trip

The Wichita Mountains, Oklahoma

A tour of Eocambrian rifting and Permian erosion



and Short Course

***Borehole Imaging: From Acquisition to Interpretation***

Presented by Valentina Vallega, Senior Borehole Geologist and  
Geology Team Leader, Schlumberger, Midland, Texas



**AAPG**

Southwest Section



## 2014 Southwest Section AAPG Annual Conference 11-14 May • Midland, Texas

 **AAPG**  
Southwest Section

 **West Texas Geological Society**

### 2014 ANNUAL CONFERENCE

11-14 May • Midland, TX



**OLD BASINS – NEW IDEAS**  
Exploiting the Resource, Reaping the Rewards

### LUNCHEONS

Monday - 12th

All-Convention Lunch



**Patrick Dearen**  
"From the Middle  
Concho to Horsehead  
Crossing: The Old  
West's Skeleton Plain"

Tuesday - 13th

DPA Ethics Lunch



**Dr. Rusty Riese**  
"Climate Change"

### FIELD TRIPS

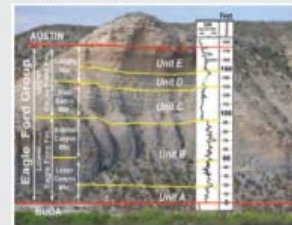
8 - 11 May, 2014

Glass Mountains



14 - 17 May, 2014

Eagle Ford



# Bill Hailey Memorial Short Course

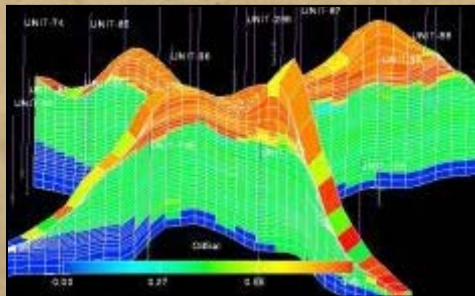
On January 5, 2015 in Abilene, Texas  
On January 6, 2015 in Fort Worth, Texas

Southwest Section-AAPG  
presented the  
2015 Bill Hailey Memorial Short Course

**FREE TO ALL SOUTHWEST SECTION MEMBERS**

*Carbonate Depositional Systems*

by:  
**Art Saller**



[www.southwestsection.org](http://www.southwestsection.org)



**AAPG**

Southwest Section



The Southwest Section has very active **Young Professionals** Groups

## 2013 Dallas YP Social



8/29/2013

AAPG Division of Professional Affairs  
Invites SWS AAPG & DGS Young Professionals to

**Meet and Greet**

Featuring:

**Bob Shoup**  
Petroleum Geologist

**10 Habits of Successful Oil Finders**

Shoup has over 30 years experience in the oil and gas industry specifically in: basin analysis, regional studies, new play generation, prospect evaluations, field studies, drilling operations, and project management. He has discovered/help discover more than 100 MMbblq over his career. Shoup currently works as an independent consultant as well as, instructs surface mapping, slick look techniques, classic environments, and reserve estimation

**The MASON Club**  
2705 Guadalupe, Dallas, TX 75204

Thursday October 24,  
2013 from 5:30-7:30

Two free drinks and snacks  
provided



10/24/2013

## 2014 Dallas YP Career Panel Discussion



1/21/2014

## Southwest Section **AAPG Student Chapters**

- Angelo State University
- Baylor University
- Hardin-Simmons University
- Midwestern State University
- New Mexico State University
- Southern Methodist University
- Sul Ross Geology Club
- Texas Christian University
- Texas Tech University
- UT Arlington
- UT Dallas
- UT El Paso



**AAPG**

Southwest Section





**AAPG**

**Imperial Barrel  
Award 2015**

A Joint Program of AAPG and the AAPG Foundation

## Southwest Section's 2015 Participating Schools

- Baylor University
- Sul Ross State University
- Texas Christian University
- Texas Tech University
- University of Texas at Arlington
- University of Texas at Dallas
- University of Texas at El Paso



**AAPG**

Southwest Section

## Southwest Section AAPG 2015 Imperial Barrel Competition Brookhaven College Geo Technology Institute (BCGI)

Saturday March 25, 2015

Seven Teams Competed in This Years' Competition

- Baylor University
- Sul Ross State University
- Texas Christian University
- Texas Tech University
- University of Texas - Arlington
- University of Texas – Dallas
- University of Texas – El Paso



1<sup>st</sup> Place: UTEP



2<sup>nd</sup> Place: TCU



3<sup>rd</sup> Place: UTA